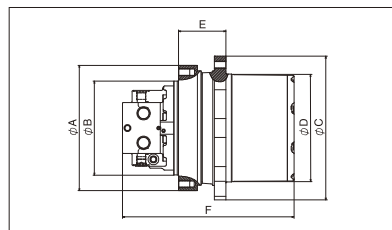


TH Series

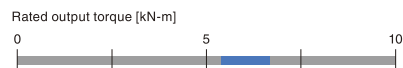


[Main Application]

- Compact track loaders, crawler carriers, traveling units for agricultural machinery

[Features]

- Compatible with HST system
- Motor unit with reducer for high speed and high pressure
- Built-in parking brake
- 2-speed motor (high/low speed)



■ Specification

		TH06VB	TH07VB
Rated Output Torque	N-m	5390	6670
Max. Output Speed	min-1	130	170
Max. Pressure	MPa	34.3	41.2
Max. Flow Rate (ref.)	L/min	72	110

■ Outline Dimensions

		TH06VB	TH07VB
A	mm	270	280
B	mm	200	210
C	mm	279	321
D	mm	200	241.3
E	mm	106	106
F	mm	361	383.5

EM series



[Main Application]

- Traveling unit for various construction machines such as hydraulic excavators

[Features]

- Compact, highly efficient hydraulic motors
- The technology of the highly reliable GM Series is used
- Shockless relief valve, built-in parking brake
- 2-speed motor (high/low speed)

■ Specification

		EM138V	EM290V
Max. Motor Displacement	cm ³ /rev	138	290
Max. Pressure	MPa	35	34.3
Max. Flow Rate (ref.)	L/min	220	390