

**Traveling** Travel units



**High Quality and Reliability**

- Long track record of supplying GM Series since 1970s
- Cumulative shipments exceeding 3 million units

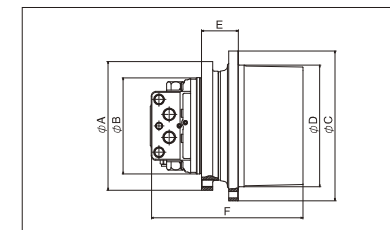
**Wide Product Lineup**

- Used in mini to 90-ton class hydraulic excavators
- Suitable for various mobile hydraulic machines, such as cranes, compact track loaders, and mining equipment

**Compact Design with No Waste**

- Simple 2-speed switching mechanism
- Built-in design with parking brake and control valves

**GM Series**



[Main Application]

- Traveling unit for various construction machines such as hydraulic excavators

[Features]

- Compact, high-efficiency motor unit with reducer
- High reliability proven by many years of market experience
- Shockless relief valve, built-in parking brake
- 2-speed motor (high/low speed)

Rated output torque [kN-m]



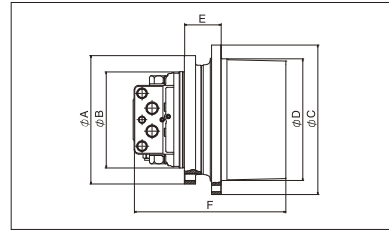
■ Specification

		GM04VA	GM06VB	GM07VC2	GM10VA2	GM11VA2	GM21VB	GM22VB
Rated Output Torque	N-m	4020	5840	6860	9810	10790	20600	21600
Max. Output Speed	min-1	60	60	60	60	60	60	60
Max. Pressure	MPa	24.5	24.5	31.4	31.4	31.4	35	35
Max. Flow Rate (ref.)	L/min	37	50	64	93	93	128	128
Applicable Excavator Weight (ref.)	ton	2.5~4.5	4~5.6	5.5~6.2	6~8	6~8	9~14	9~14

■ Outline Dimensions

		GM04VA	GM06VB	GM07VC2	GM10VA2	GM11VA2	GM21VB	GM22VB
A	mm	215	246	268	280	280	308	308
B	mm	165	180	210	210	210	246	246
C	mm	255	288	306	326	326	394	394
D	mm	204	230	250	265	265	324	324
E	mm	70	75.5	68	80	80	99.5	99.5
F	mm	267.5	272.2	315	332.5	332.5	402	402

## GM Series



### [Main Application]

- Traveling unit for various construction machines such as hydraulic excavators

### [Features]

- Compact, high-efficiency motor unit with reducer
- High reliability proven by many years of market experience
- Shockless relief valve, built-in parking brake
- 2-speed motor (high/low speed)

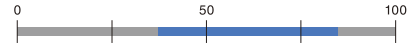
### ■ Specification

		GM38VB	GM38VC	GM60VB2	GM70VA	GM85VA
Rated Output Torque	N-m	37300	36870	59400	66200	84800
Max. Output Speed	min-1	50	50	45	40	35
Max. Pressure	MPa	35	35	34.3	34.3	34.3
Max. Flow Rate (ref.)	L/min	220	220	346	336	357
Applicable Excavator Weight (ref.)	ton	15~25	15~25	29~34	34~40	41~48

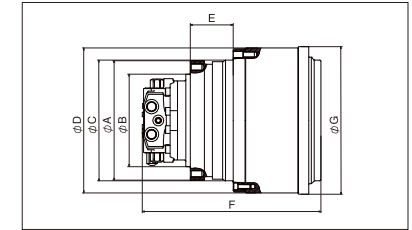
### ■ Outline Dimensions

		GM38VB	GM38VC	GM60VB2	GM70VA	GM85VA
A	mm	370	370	480	462	493
B	mm	300	300	380	380	410
C	mm	470	470	525	568	665
D	mm	402	402	450	490	570
E	mm	98.5	98.5	102.5	112	148
F	mm	531	444	565	617	629

Rated output torque [kN-m]



## RG Series



### [Main Application]

- Traveling unit for crawler cranes and other heavy equipment vehicles

### [Features]

- Motor unit with planetary 3-stage high speed reducer
- Built-in parking brake
- 2-speed motor (high/low speed)
- Usable also in series circuits

### ■ Specification

		RG12D	RG16B	RG20C	RG25B	RG35C	RG45C
Rated Output Torque	N-m	109000	151000	191000	232000	317000	424000
Max. Output Speed	min-1	17.1	17.7	13	10	8	6
Max. Pressure	MPa	34.3	34.3	34.3	34.3	34.3	34.3
Max. Flow Rate (ref.)	L/min	336	375	375	375	318	336
Applicable Crane Capacity (ref.)	ton	50~70	70~100	80~90	100~200	150~200	200~280

### ■ Outline Dimensions

		RG12D	RG16B	RG20C	RG25B	RG35C	RG45C
A	mm	426	426	448	448	548	548
B	mm	330	330	335	335	375	375
C	mm	430	430	450	450	550	550
D	mm	510	510	533	540	671	671
E	mm	152	152	182	190	255	255
F	mm	635.5	636	776.5	800	894	913
G	mm	526	526	632	632	783	783

Rated output torque [kN-m]

