

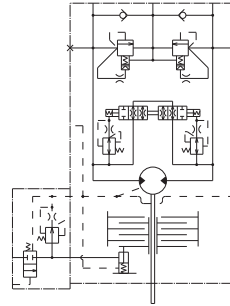
MFC

Main application

Swing motor for excavator and other construction machinery

Features

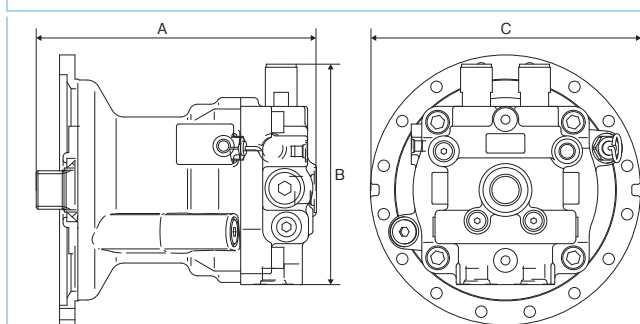
1. Light weight, compact design
 - Integral structure of motor housing and cover of a reduction gear box [MFC20-160]
 - Integral structure of cylinder block and shaft, support of the male shaft on motor cover
2. Quiet Operation
 - Highly rigid integral structure of cylinder block and shaft
3. High efficiency, excellent self-priming capability
 - Optimal hydraulic balance of valve plate enlarged oil passage.
 - Radial layout of pistons can achieve the high efficiency and high self-priming capability.
4. Improved fine operation
 - Decreasing leakage amount at low pressure and improving the start efficiency enables to improve the fine operation.
5. Abundant Optional functions.



MFC

Specification		MFC20	MFC40	MFC65	MFC80	MFC160	MFC200	MFC250
Motor displacement	cm ³ /rev	22	45.5	64.3	79.2	151	187	250
Max. pressure	MPa	20.6	27.5	34.3	34.3	34.3	34.3	34.3
Max. speed	min ⁻¹	3,000	2,500	2,150	2,000	1,600	1,500	1,350
Max. output torque	N·m	62	173	305	375	716	888	1,187
Function	Anti swing-back	○	○	○	○	○	○	○
	Shockless relief	○	○	○	○	○	○	○
	Supershockless relief	○	○	○	○	○	○	○
	Time delay valve	○	○	○	○	○	○	○
Unit weight	kg	15	20	26	33	45	58	77
Applicable excavator weight	ton	4~6	6~8	8~12	12~16	16~25	25~36	36~

Outline dimensions



	MFC20	MFC40	MFC65	MFC80	MFC160	MFC200	MFC250
A	139	238	248	266	319	332	383
B	188	195	224	222	247	278	328
C	147	217	264	264	307	370	284