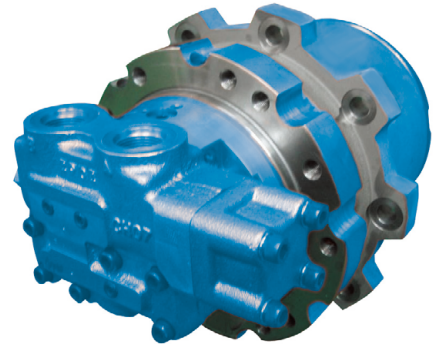
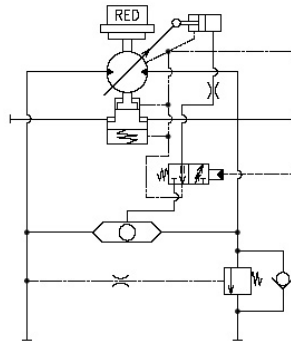


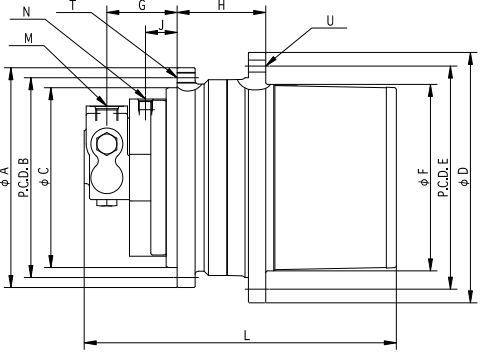
CH Series -VB type -

- Main Application** / Winch motor for cranes
- Features**
- Smooth rotation from low to high speed
 - Dram in type
 - All in one design
 - Long Life Operation
 - High Speed Mode



CH04VB2

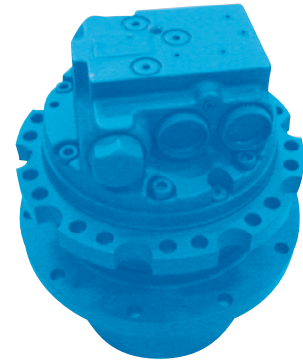
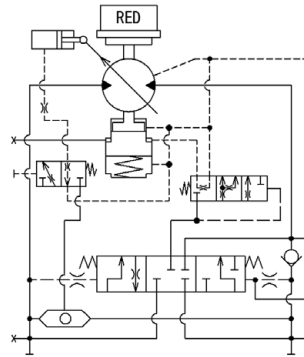
Specifications		CH04VB2	CH12VB2	CH18VB
Max. Output Torque	N-m	4,460	11,500	18,000
	(kgf-m)	(455)	(1,170)	(1,840)
Max. Output Speed	min ⁻¹	170	150	126
Gear Ratio	1/R	24.2	25.77	26.58
Max. Working Pressure	MPa	24.5	29.4	29.4
	(kgf/cm ²)	(250)	(300)	(300)
Max. Motor Displacement	cm ³ /rev	54.3	110.1	169.0
Max. Motor Speed (Small Displ.)	min ⁻¹	3,700	3,200	2,900
Rated Flow	L/min	155	280	400
Motor Parking Brake Torque	N-m	260	912	1,260
	(kgf-m)	(26.5)	(93.0)	(128)
Unit Weight	kg	92	143	189
Applicable Crane Capacity	ton	7~13	16~25	50~70

Dimensions	CH04VB2	CH12VB2	CH18VB
			
A	280	330	354
B	250	300	324
C	210	270	290
D	321	376	404
E	282.58	335	374
F	241.3	280	324
G	53.5	105.5	124.7
H	101	133	131
J	53.5	47.5	68.7
L	352	453.5	482
M	2-G 3/4	2-G 1	2-G 1
N	G1/2	G1/2	G1/2
T	13-M16	16-M16	22-M16
U	9-φ18	8-φ17.5	15-φ18

All data are subject to improvements and changes without notice.
For more detail information, please consult us.

CH Series -H type -

- **Main Application** / Winch motor for cranes
- **Features**
 - Smooth rotation from low to high speed
 - Dram in type
 - All in one design
 - Long Life Operation
 - High Speed Mode



CH04H

Specifications		CH04H	CH10VH
Max. Output Torque	N-m	3,900	9,810
	(kgf-m)	(398)	(1,000)
Max. Output Speed	min ⁻¹	120	100
Gear Ratio	1/R	27.94	50.111
Max. Working Pressure	MPa	24.5	25.0
	(kgf/cm ²)	(250)	(255)
Max. Motor Displacement	cm ³ /rev	55.8	55.8
Max. Motor Speed (Small Displ.)	min ⁻¹	3,300	3,700
Rated Flow	L/min	155	155
Motor Parking Brake Torque	N-m	265	265
	(kgf-m)	(27.0)	(27.0)
Unit Weight	kg	66	84

Dimensions	CH04H	CH10VH
A	260	280
B	236	250
C	200	210
D	279	326
E	256	300
F	200	265
G	81.5	66
H	84.5	80
L	341	332
M	2-G3/4	2-G3/4
N	G1/2	G1/2
T	19-φ13.5	18-M16
U	10-φ13.5	12-φ16

