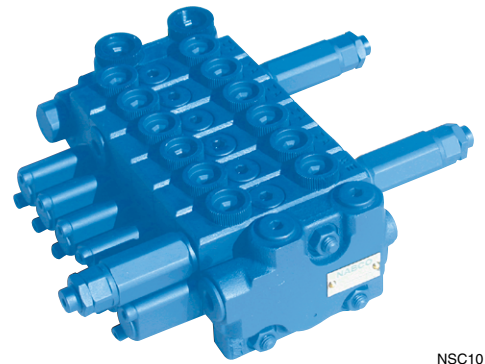


Control Valves (Manual / Pilot Operation)



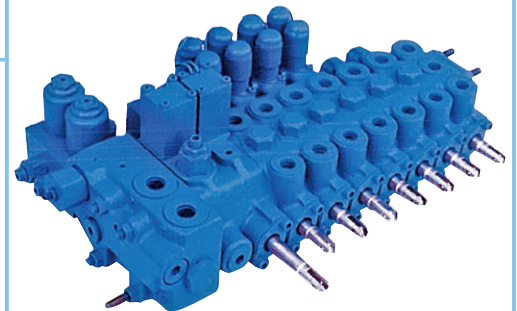
NSC10

- **Main Application** / Track Mounted Cranes, Drilling Machines, Snowplows, Aerial Working Platforms, Agricultural Machines, etc.
- **Features**
 - / • Space Saving with Compact Design
 - Modular Stack Valve, Available up to 10 Blocks
 - Tandem and Parallel Circuit are Available

Specifications / Functions		NSC10	SC3A	BCV35	BCV65
Structure		Sectional Type	Sectional Type	Sectional Type	Sectional Type
Number of Pumps		1 or 2	1 or 2	1, 2, or 3	1, 2, or 3
Rated Pressure	MPa (kgf/cm²)	20.6 (210)	20.6 (210)	24.5 (250)	24.5 (250)
Rated Flow per pump	L/min	15	50	35	65
Bank Width	mm	24	34	31	38
Spool Diameter	mm	φ10	φ13	φ12	φ14.5
Spool Operation	Manual	A	A	A	A
	Pilot	A	A	A	A
Pump Unload		NA	A*1	A*1	A*1
Manual Lever		A	A	NA	NA
Carry-over		A	A	NA	NA
Accessory Valve		A	A	A	A

(*1) Depend on circuit structure

Solenoid Valves



NSS50

- **Main Application** / Track Mounted Cranes, Refuse Trucks, Concrete Pump Cars, Car Carriers, etc.
- **Features**
 - / • Space Saving with Compact Design
 - Solenoid Control Valves, Available Manual Control (Pin or Lever Operation) in an Emergency Case
 - Tandem, Parallel and Series (DSS Type) Circuit are Available

Specifications / Functions		NSS50	DSS50
Structure		Sectional Type	Sectional Type
Number of Pumps		1	1
Rated Pressure	MPa (kgf/cm²)	20.6 (210)	20.6 (210)
Rated Flow per pump	L/min	50	50
Spool Diameter	mm	φ13	φ13
Rated Voltage	V	DC12/DC24	DC24
Spool Operation	Solenoid	A	A
	Manual	A	A*1
Pump Unload		A	NA
Manual Lever		A	NA
Accessory Valve		NA	A
Circuit	Parallel	A	A
	Tandem	A	A
	Series	NA	A

(*1) Emergency Change-Over Only