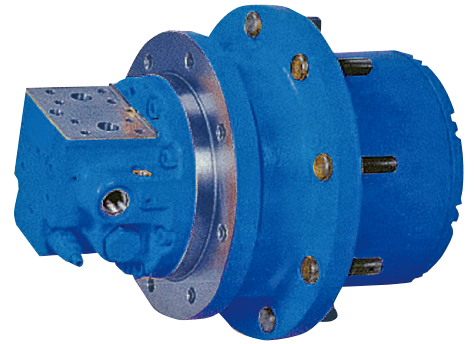
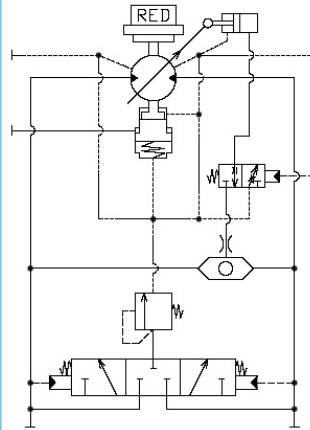


# TH Series

- **Main Application** / Track motor
  - Compact track loaders
  - Carriers
  - Crawler tractors
- **Features**
  - / • HST application
  - High speed 2-speed motor
  - All in one design



TH07VB

Specifications		TH06VB	TH07VB	TH12VB
Max. Output Torque	N-m	5,439	6,670	11,500
	(kgf-m)	(550)	(680)	(1,170)
Max. Output Speed	min <sup>-1</sup>	130	170	150
Gear Ratio	1/R	27.94	max. 24.2	25.77
Max. Working Pressure	MPa	34.3	41.2	34.3
	(kgf/cm <sup>2</sup> )	(350)	(420)	(350)
Max. Motor Displacement	cm <sup>3</sup> /rev	36.3	54.5	104.8
Max. Motor Speed (Small Displ.)	min <sup>-1</sup>	4,000	3,700	3,200
Motor Parking Brake Torque	N-m	235	314	657
	(kgf-m)	(24)	(32)	(67)
Unit Weight	kg	66	88	145

Dimensions	TH06VB	TH07VB	TH12VB
<b>A</b>	270	280	330
<b>B</b>	235	250	300
<b>C</b>	200	210	270
<b>D</b>	279	321	376
<b>E</b>	241.3	282.58	335
<b>F</b>	200	241.3	280
<b>G</b>	70	78	87.5
<b>H</b>	106	106	133
<b>J</b>	0	5	7
<b>L</b>	361	383.5	486
<b>M</b>	2-G3/4	2-G3/4	2-G 1
<b>N</b>	2-G1/2	2-G1/2	2-G3/4
<b>P</b>	G1/4	G1/4	G1/4
<b>R</b>	49.5	49	59
<b>S</b>	50	66	100
<b>T</b>	12-M16	12-M16	18-M16
<b>U</b> *	9-M16(φ18)	9-M16(φ18)	24-M20

\*1 ( ) are option specifications